

PERFECT SOLUTION

HEAVY DUTY

WITH XGMA INDUSTRY



INTRODUCTION

XGMA products cover engineering machinery in series such as loaders, excavators, small machines, road equipment, forklifts and tunnel boring machines, offering products with efficiency, flexibility, reliability and durability. An internationalization strategy has been implemented by XGMA since 2008 with access to overseas markets, with more than 250 sales and service providers around the world, creating fast logistics supply and technical support systems, and providing solutions to engineering machinery systems for customers around the world.

Furthermore, in 2026, XGMA established a business collaboration with **PT Nusantara Adzana Teknik** in an effort to provide the best solutions for the Indonesian region.



GENERAL TYPICAL PRODUCT

Boasting **13 premier product** categories, XGMA delivers comprehensive machinery solutions designed to tackle any challenge, seamlessly supporting operations from mining infrastructure and roadworks to complex tunnel excavations.



CRAWLER EXCAVATOR



WHEELED EXCAVATOR



WHEEL LOADER



FORKLIFT (DIESEL & BATERAI)



ROAD ROLLER



MINING DUMP TRUCK



MOTOR GRADER



BULLDOZER



BACKHOE LOADER



FORKLIFT TRUCK / HEAVY LOADER



TUNNEL BORING MACHINE



CONCRETE PUMP TRUCK



SKID STEER LOADER

CRAWLER EXCAVATOR



XGMA excavators are built to handle tough jobs, from road construction to heavy mining. They feature powerful engines from top brands like Cummins, Scania, Isuzu, and Yanmar, combined with advanced hydraulic systems for fast and strong digging. Their heavy-duty steel structure is 50% stronger than similar machines in the market, making them highly durable. In addition to their power, these excavators are smart and safe. The comfortable cabin protects operators from dust and noise, and it comes with a 10-inch touchscreen, 360-degree cameras, and real-time system monitoring. By combining great fuel efficiency with low operating costs (OPEX), XGMA excavators offer a smart, reliable, and highly profitable investment for your projects.

No	Series	Engine Name	Capacity (Ton)
1	XG806F	YANMAR 4TNV94L	6
2		YANMAR 4TNV98	6
3	XG809F	YANMAR 4TNV98T	8.2
4	XG815EL/FL	CUMMINS 4BTAA3.9	14.5
5		CUMMINS QSF3.8	14.5
6	XG822EL	CUMMINS 6BTAA5.9	22
7		ISUZU 6BG1TRP	22
8	XG822FL	CUMMINS QSB7.0	22.8
9		ISUZU 4HK1X	22.8
10	XG825EL/FL	CUMMINS 6BTAA5.9	24

No	Series	Engine Name	Capacity (Ton)
11	XG836EL	CUMMINS 6LTAA8.9	35
12	XG836FL	CUMMINS QSL8.9	35
13		ISUZU 6HK 1	35
14	XG839EL	ISUZU 6HK1X	37.5
15	XG852FL	ISUZU 6WG1	51.5
16	XG870EL	CUMMINS QSM15	65
17	XG899EL	Scania DC16	98
18	XG8110EL	Scania DC16	108
19	XG8135EL	Cummins QSK23	125



WHEELED EXCAVATOR

Expertly engineered to conquer diverse working conditions, XGMA's versatile machinery is powered by a series of customized, high-performance Yuchai engines integrated with advanced load-sensing hydraulic systems that significantly reduce unnecessary displacement loss and optimize energy consumption. Designed for superior durability and ease of use, these units feature XGMA's reinforced drive axles to ensure lasting reliability, alongside smartly organized space layouts and integrated GPS configurations that streamline both maintenance and fleet management. Furthermore, the newly upgraded, ergonomically widened safety cabs utilize advanced silent muffling technology to provide operators with a highly comfortable, low-noise environment, while a comprehensive selection of interchangeable working attachments guarantees that each machine can be perfectly tailored to meet the specific demands of any project.

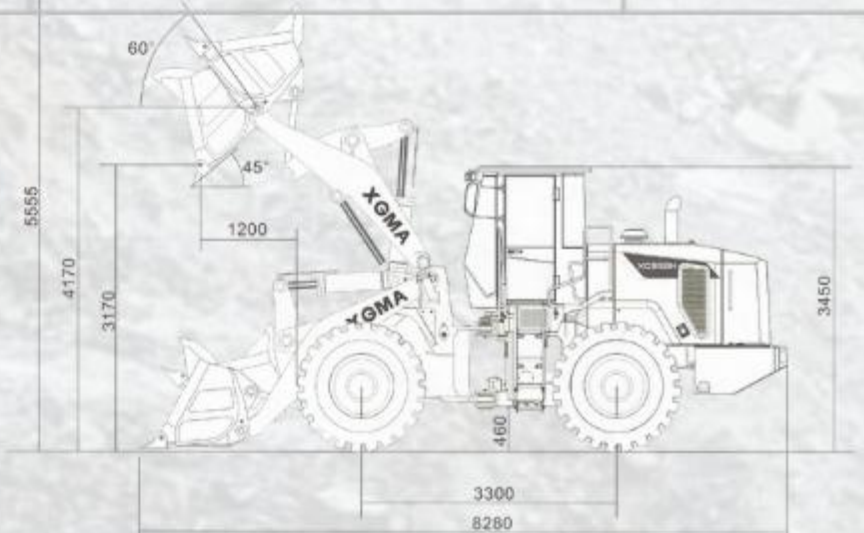
No	Series	Engine Name	Capacity (Ton)
1	XG8075WS	Yuchai YC4FA30	6.6
2	XG8085WH	Yuchai YCF3070-T301	6.6
3	XG8105WJ	Yuchai YC4DK75-T303	8.3
4	XG8125WH	Yuchai YC4DK90-T304	9

WHEEL LOADER



XGMA wheel loaders are designed for flexibility and high performance in any workspace. Featuring a short wheelbase and a small turning radius, they move quickly and easily, even in narrow areas. Powered by reliable turbocharged engines and heavy-duty transmissions, these loaders can handle heavy loads smoothly. For operator safety and comfort, they come with a spacious, sound-proof cab, explosion-proof glass, and easy-to-use controls. Additionally, high-quality durable parts and a wide-opening hood make daily maintenance fast and simple.

No	Series	Engine Name	Capacity (Ton)
1	XG931N	YC6J125Z-T21	3
2	XG936N	YC6J125Z-T20	3.2
3	XG955N	SC11CB220G2B1	5
4	XG958N	SC11CB220G2B1	5
5	XG968N	SC11CB240.1G2B1	6.5
6	XG918H	4B3-G92X1A-U2	1.8
7	XG920N	QSB3.9-C100-31	2





FORKLIFT (DIESEL & BATERAI)

The E/E-PLUS series forklifts offer the perfect balance of efficiency, durability, and safety for heavy-duty logistics. The engine models feature fuel-efficient, low-noise engines with advanced cooling systems, ensuring reliable and continuous operation under heavy loads. The controls are easy and comfortable to use, reducing operator fatigue. For electric options, the maintenance-free lithium-battery models provide up to 8 hours of work with just a 2-hour fast charge. They perform exceptionally well even in freezing temperatures (-20°C), making them ideal for all-day use in cold storage facilities.

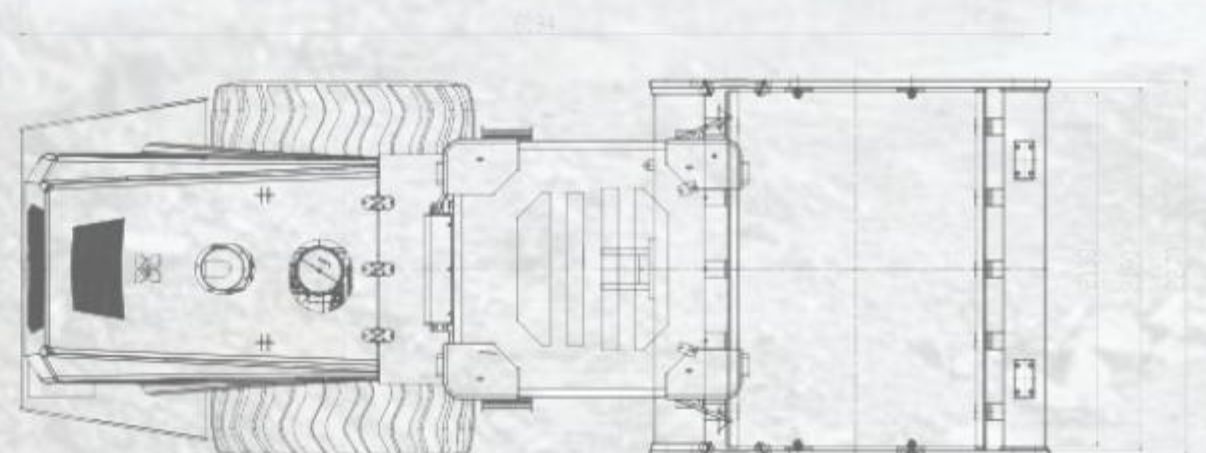
No	Series	Engine Name	Capacity (Ton)
1	XG530-D5	Xinchai4D27G31	3
2	XG530-DT5	Xinchai4D27G31	3
3	XG535-D5	Xinchai4D27G31	5
4	XG535-DT5	Xinchai4D27G31	5
5	XG550-DT5	CY4BG231-15	7.900±5%
6	XG570-DT5	CY4BG231-15	9.300±5%
7	XG5100-DT5	CY4BG231-15	12.500±5%
8	XG525B-LAA5	Lithium battery	2.5
9	XG530B-LAA5	Lithium battery	3
10	XG535B-LAA5	Lithium battery	3.5



ROAD ROLLER

These road rollers are highly versatile, perfect for compacting asphalt, soil, and gravel in city roads, municipal works, and small-scale projects. Designed for maneuverability and precision, they feature a flexible articulated frame and offer the operator excellent visibility of the drum edges. Powered by high-torque, eco-friendly engines, they ensure smooth operation with low fuel consumption. Top-tier hydraulic components and an efficient sprinkling system guarantee reliable performance. For maximum comfort and ease, the machine includes a spacious, vibration-absorbing cab and a wide-opening hood with centralized test points for fast and simple maintenance.

No	Series	Engine Name	Capacity (Ton)
1	XG6035D	V20-38C41	3
2	XG6203P	XG6203P	20
3	XG610H	6BTA5.9-C150	6
4	XG612H	6BTA5.9-C150	7.2
5	XG614H	6BTA5.9-C150	8.3
6	XG618H	SC7H190.2G2	18,5
7	XG620H	SC7H190.2G2	20





MINING DUMP TRUCK

The XG90MT/AT mining truck is built for maximum power and profitability. It features a highly reliable Weichai engine and a heavy-duty FAST transmission (7 forward, 1 reverse gear) specifically designed for tough mining roads and excellent fuel economy. The advanced hydraulic steering system ensures a small turning radius and effortless handling in harsh conditions. Additionally, the premium Hyva hoisting system delivers powerful, safe, and stable lifting with a very low failure rate, making it the perfect choice for heavy-duty mining operations.

No	Series	Engine Name	Capacity (Ton)
1	XG90,	XG90MT/AT	60
2	XG105,	XG105MT/AT	70
3	XG136	CA6DX3-77GG31 770	91



BACKHOE LOADER

This versatile 2-in-1 machine perfectly combines an excavator and a loader, making it ideal for a wide range of projects including construction, landscaping, agriculture, and municipal works. It features a highly reliable transmission for powerful performance, precise controls, and supports various attachments to handle any job. For operator comfort, it is equipped with a full-glass cab and a rotating, shock-absorbing seat, while the front-flip hood makes daily maintenance quick and effortless.

No	Series	Capacity (Ton)
1	XG765N	8.20
2	XG765H-4TX	9.12

FORKLIFT TRUCK HEAVY LOADER



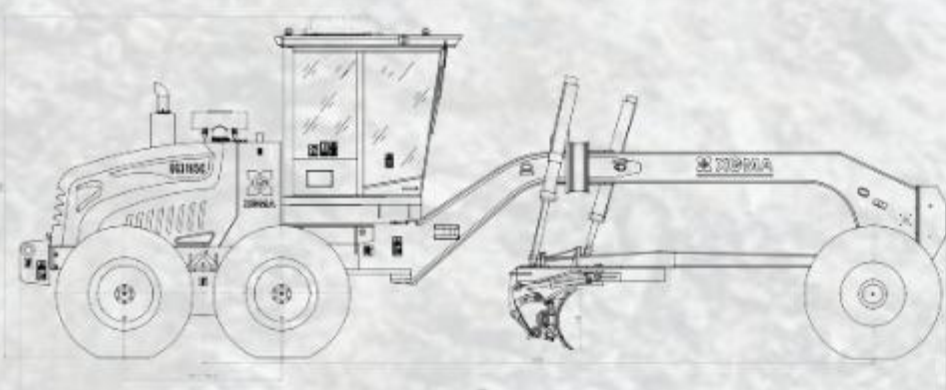
These versatile heavy-duty loaders are available in multiple models with impressive lifting capacities ranging from 18 to over 23 tons. Powered by a fuel-efficient, 6-cylinder turbocharged engine, they deliver outstanding power and torque. The double-turbo torque converter ensures smooth handling, while the four-wheel disc brake system provides maximum safety. Designed for comfort and adaptability, they feature a pressurized cabin and can easily switch between bucket and pallet fork operations to suit any project requirement.

No	Series	Engine Name	Capacity (Ton)
1	XG9180T	HangfaD10.22T21	18.00
2	XG9210T	HangfaD10.24T21	21.00
3	XG9230T	HangfaD10.24T21	23
4	XG9280T	HangfaD10.24T21	28
5	XG9420T	WD10G270E201	42
6	XG9500T	WD12G336E211	50



MOTOR GRADER

These motor graders are powered by eco-friendly, fuel-efficient diesel engines optimized for maximum power and high working efficiency. They feature a flexible power shift transmission (6 forward, 3 reverse gears) and a specialized rear axle with a slip-proof differential for superior traction. Equipped with highly reliable HUSCO valves, the fully hydraulic blade control ensures precise and effortless grading operations.



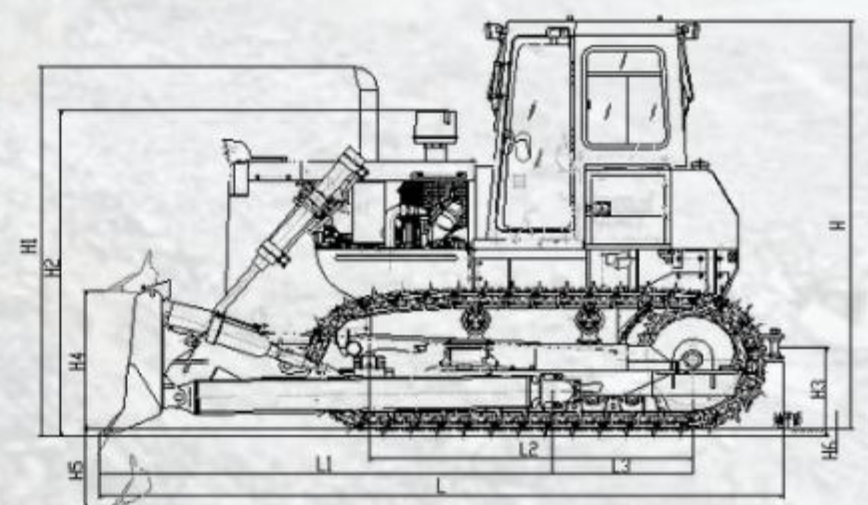
No	Series	Engine Name	Capacity (mm)
1	XG3165C	6BTAA5.9-C180	3965×610
2	XG3180C	6BTAA5.9-C180	3965×610
3	XG3200N	SC9D220G2	4270×610
4	XG3220N	SC9D220G2	4270×610

BULLDOZER



Built for rugged terrains, this machine features a balance beam suspension and highly wear-resistant caterpillar tracks for outstanding stability and durability. It is equipped with a precise and reliable hydraulic control system and comes with a heavy-duty S-blade as standard (with U-blade and angle blade options available) to handle versatile earthmoving tasks efficiently.

No	Series	Engine Name	Capacity (kW)
1	XG4161L	WD10G178E355	131.00
2	XG4221L	QSNTC235S30	175.00
3	XG4321L	QSNTC345S30	257

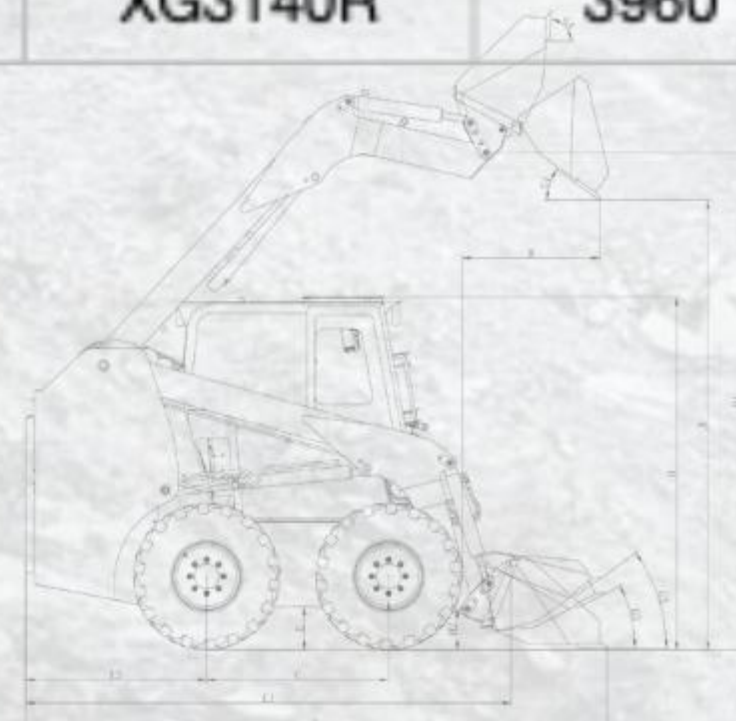




SKID STEER LOADER

This highly efficient Skid Steer Loader features an operating weight of 3960 kg and delivers a strong 1400 kg rated load with a 0.54 m³ standard bucket capacity. Designed for maximum agility in tight spaces, it offers a compact turning radius of just 1625 mm and a top speed of 20 km/h. Driven by a powerful 28 kN breakout force and a rapid hydraulic cycle, it completes a full lift, dump, and lower operation in just 9.4 seconds, ensuring fast and productive performance on any job site.

No	Series	Capacity (Ton)
1	XG3080R	2390.00
2	XG3120R	3630.00
3	XG3140R	3960

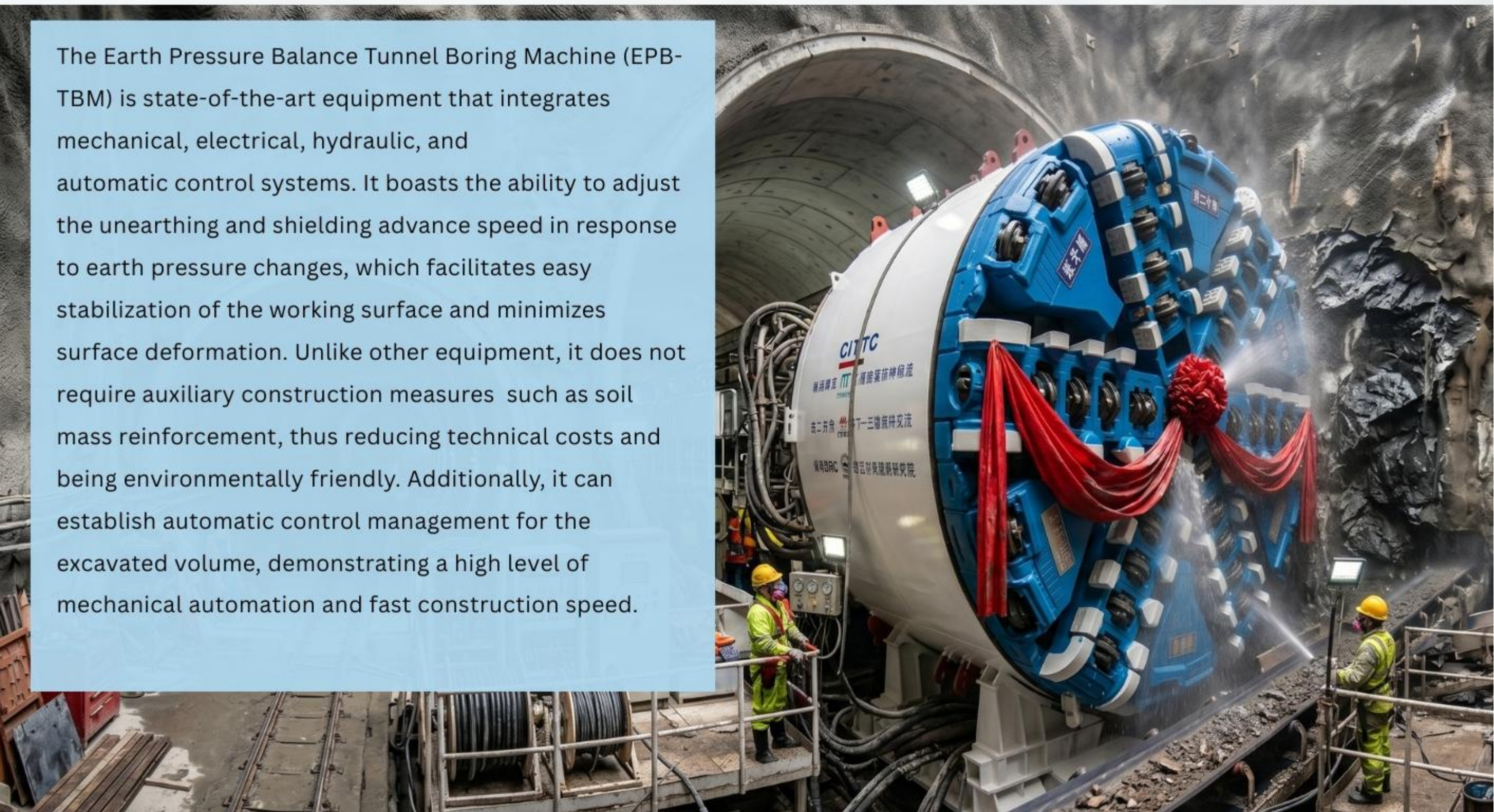


WATER TOWER FIRE TRUCK

Equipped with German original imported MAN chassis, German high-efficiency compressed-air foam system (CAFS), image monitoring head, and loaded with 5 sections of folding boom, XGMA's large span CAFS water tower fire truck can monitor the fire scene information in real time. Its core technology is to carry compressed-air foam system (CAFS) through 48m folding boom. It is the advanced mobile fire extinguishing equipment of large span, super high-rise and super flow CAFS in the world



The Earth Pressure Balance Tunnel Boring Machine (EPB-TBM) is state-of-the-art equipment that integrates mechanical, electrical, hydraulic, and automatic control systems. It boasts the ability to adjust the unearthing and shielding advance speed in response to earth pressure changes, which facilitates easy stabilization of the working surface and minimizes surface deformation. Unlike other equipment, it does not require auxiliary construction measures such as soil mass reinforcement, thus reducing technical costs and being environmentally friendly. Additionally, it can establish automatic control management for the excavated volume, demonstrating a high level of mechanical automation and fast construction speed.





**NUSANTARA
ADZANA TEKNIK**

HEAVY DUTY WITH XGMA INDUSTRY

PT NUSANTARA ADZANA TEKNIK

Alamat Kantor

CFX TOWER, Jl. Gatot Subroto No.Kav.\35-36, RT.6/RW.3,
Kuningan, Tim., Kecamatan Setiabudi, Kota Jakarta
Selatan, Daerah Khusus Ibukota Jakarta
12950, Setiabudi, Kota Administrasi
Jakarta Selatan, DKI Jakarta 12950

Alamat Email / Email Address :

arissetyo_80@yahoo.co.id
frandicahya.nat@gmail.com

Phone / Whatsapp :

+62 811-1155-595
+62 852-3442-3477

